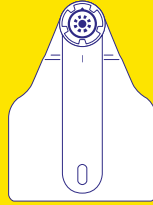
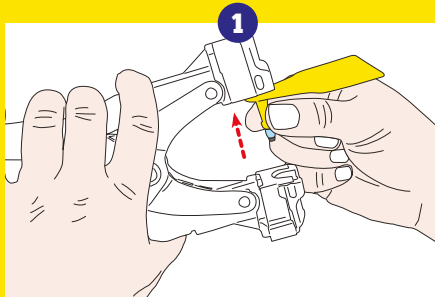


TISSUE SAMPLER + TAG

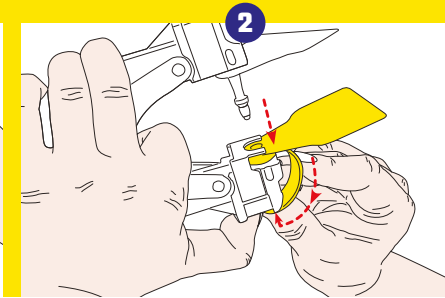


Z
TAGS™
DATAMARS

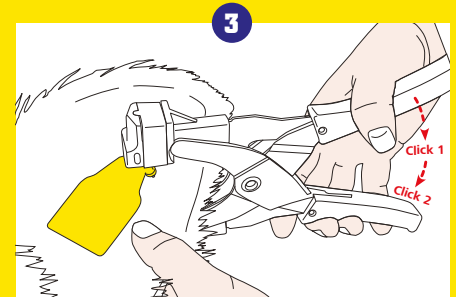
Application instructions



Slide the male tag onto the tagger pin. Position the male flag on the left or right side.



Slide the female tag into the tagger, underneath the metal plate. Place the container flag onto the tagger lug. Position the female flag to the side. Close the tagger and check the alignment between cutter tip and female tag.



Position the tag in the middle of the ear with the male tag facing the back of the ear. Drive the tagger all the way through the ear to feel a double click.

For more information on other quality Datamars brands and products, visit www.datamars.com or www.ztags.com